

NOTAS D GUARDA

| TIME MAKES IT WORK |

C A R M E N È R E

Notes which accompany the evolution of this wine, showing the patience, dedication and the search for perfection. Creator's notes which hold the secrets of his winemaking art.

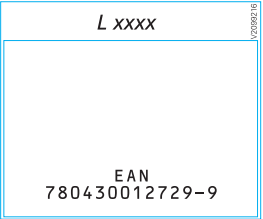
Our wines are developed and matured at Colchagua Valley. They offer a perfect balance between terroir and the art of winemaking.

An intense wine. Blends fruit and spicy aromas perfectly. Intense in mouth, with chocolate flavors that distinctively represent Colchagua Valley's munificence.

Imported by
Fondberg & Co. Stockholm, Sweden
www.fondberg.se

75 cl e Innehåller Sulfiter XX, X % vol.

Produced and Bottled by
Viña Santa Helena S.A., San Fernando - Chile
www.SANTAHELENA.CL



11% vol.
11,5% vol.
12% vol.
12,5% vol.
13% vol.
13,5% vol.
14% vol.
14,5% vol.

| | | | |
|-----------|-------------|---------|-------------|
| PAPEL | ESTATE 8 | TAMAÑO | 44 x 135 mm |
| BARNIZ | MATE | COLORES | <div></div> |
| IMPRESIÓN | FLEXOGRAFÍA | | NEGRO |