



2009 ALC. 13% BY VOL. 3L

EJEMPLO

COLOCAR GRADO ALCOHOLICO CON INK-JET EN LINEA DE ENVASADO + COSECHA + 3 L

- ALC. 12% BY VOL.
- ALC. 12.5% BY VOL.
- ALC. 13% BY VOL.
- ALC. 13.5% BY VOL.
- ALC. 14% BY VOL.
- ALC. 14.5% BY VOL.

GOVERNMENT WARNING: (1) ACCORDING TO THE SURGEON GENERAL, WOMEN SHOULD NOT DRINK ALCOHOLIC BEVERAGES DURING PREGNANCY BECAUSE OF THE RISK OF BIRTH DEFECTS. (2) CONSUMPTION OF ALCOHOLIC BEVERAGES IMPAIRS YOUR ABILITY TO DRIVE A CAR OR OPERATE MACHINERY AND MAY CAUSE HEALTH PROBLEMS.

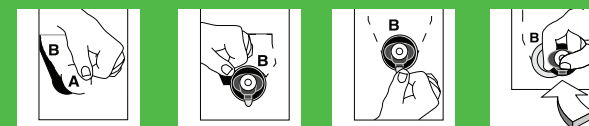
UPC  
0 88320 13009 6

IMPORTED BY Shaw Ross International Importers, Miramar, Florida  
Envasado en Chile CONTAINS SULFITES  
Produced and packed by Viña San Pedro S.A., Molina - Chile

3 Liters

3 Liters

Easy to open



1 Press firmly and tear off along the dotted line. Remove circle indicated as A.  
2 Gently pull out the valve and knock into out. Refill flap B.  
3 Remove the seal.  
4 Press the red button to pour the wine.

For recycling purposes, the inner bag, tap mechanism and handle are classified as soft plastics and the outer box as paper packaging.

Medidas: 552 x 408

Barniz: Mate / Brillante

Papel: -----

Sist. de Imp: Offset

Colores



CMYK



361